

CASO 11:



Operadores: **Ramón Calviño Santos**
Gabriela Veiga Fernández

Moderadores:

- **Fernando Sarnago Cebada**
- **Bruno García del Blanco**

Panelistas:

- **Pablo Avanzas Fernandez**
- **Roberto Blanco**
- **María Cruz Ferrer García**
- **Cristobal Urbano Carrillo**
- **Rafael Rodríguez de la Borbolla**

Glidesheath Slender® Hydrophilic Coated Introducer Sheath

- 1** Diámetro externo reducido en 1 Fr
- 2** Mantiene el diámetro del lumen
- 3** Reduce la necesidad de cambiar a un introductor de talla superior

Introductor
convencional
6Fr

**Lumen
Equivalente**

Glidesheath
Slender®
6Fr

**Diámetro externo
Equivalente**

Introductor
convencional
5Fr

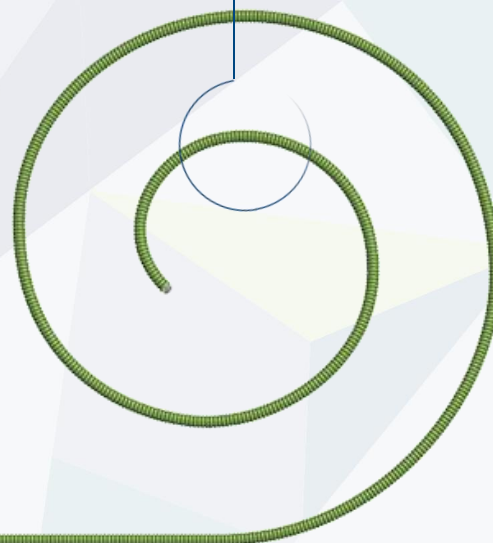
SAFARI²™

Pre-Shaped Guidewire

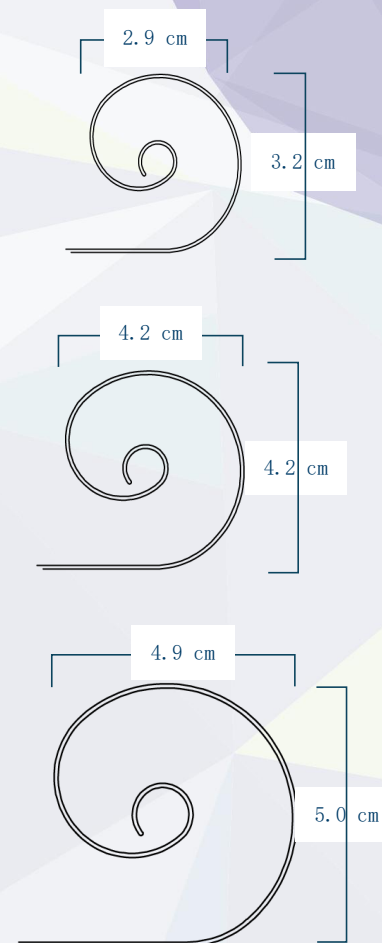
Enhanced wire predictability
with superior shape retention

Streamlined device delivery
through optimized rail support

Widest guidewire
choice with three curve sizes



- Outer Diameter: 0.035" (0.889 mm)
- Overall Length: 275 cm
- Core Material: Stainless Steel
- Coil Material: Stainless Steel
- Coating: LUBRIGREEN™ PTFE
- Unique Product Dimensions by Curve Size

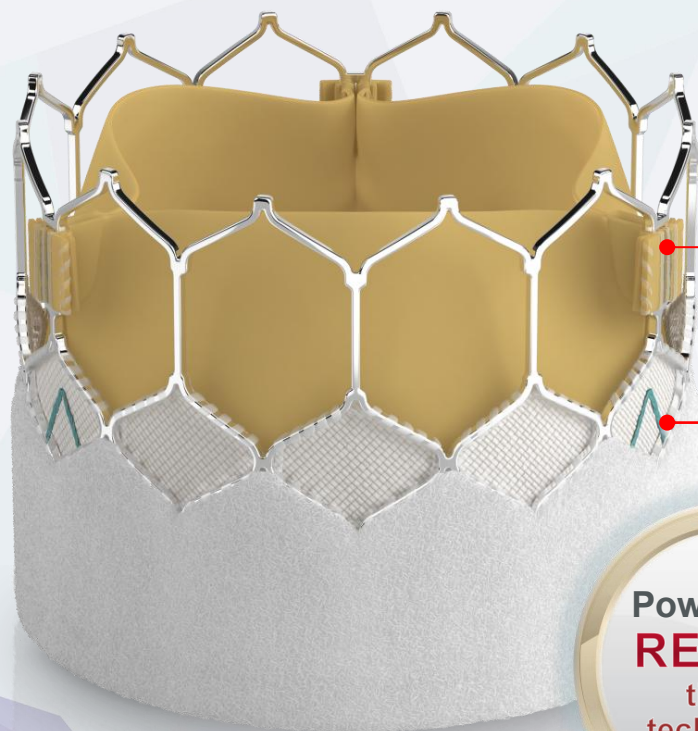


**Boston
Scientific**

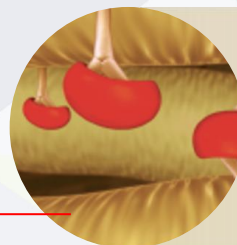
Introducing the SAPIEN 3 Ultra RESILIA valve



Edwards

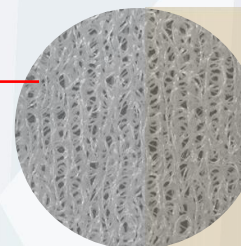


Powered by
RESILIA
tissue
technology



Advanced calcium-blocking tissue technology^{1,2}

Potential to improve valve longevity and reduce risk of reintervention



Taller*, textured outer skirt extended to 29mm valve¹

Delivering the PVL results you demand impacting immediate and long-term outcomes^{3,4}



Only THV with dry tissue storage¹

Mitigates calcium-attracting glutaraldehyde residuals



Edwards

The factors that significantly impact valve durability¹

Structural valve deterioration (SVD)

Intrinsic, permanent changes

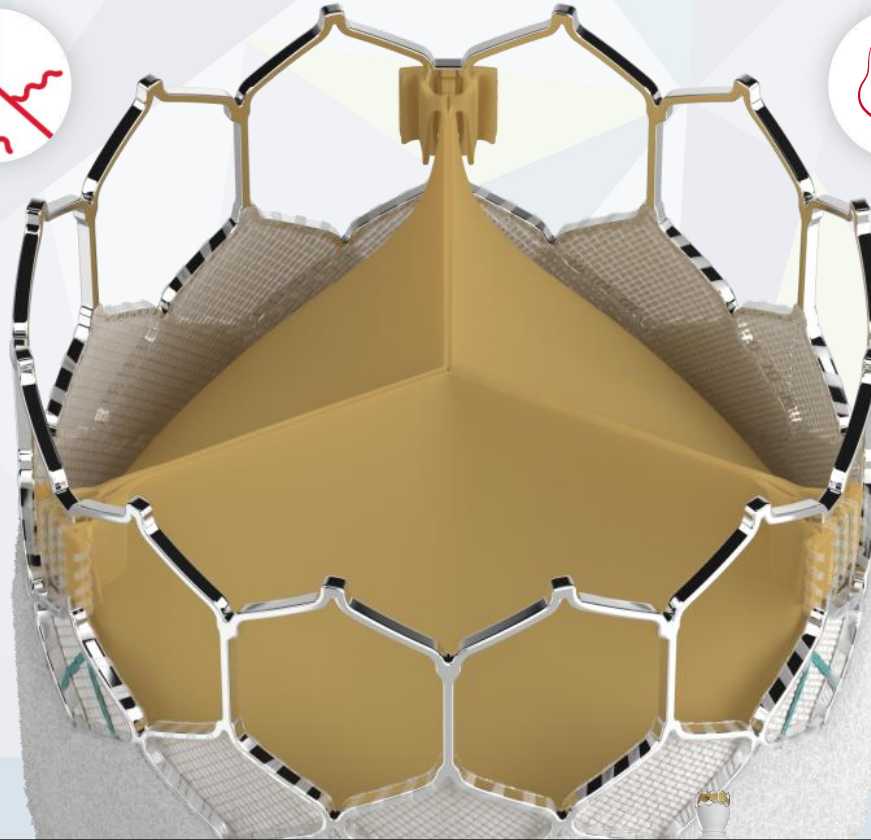
Wear and tear



Leaflet disruption/ flail



Leaflet calcification



Non-structural valve dysfunction (NSVD)

Abnormalities, not intrinsic

Paravalvular leak (PVL)



Inappropriate positioning or sizing



Patient-prosthesis mismatch



The SAPIEN 3 Ultra RESILIA valve delivers excellent outcomes

Real world 30-day registry data illustrated:

1.4%

All-cause mortality
(n = 10,312)

1.63%

TAVI reintervention
rate at 10 years

99%

Implant
success

8.3%

Permanent pacemaker
implantation
(n = 10,312)

1.8%

Stroke
(n = 10,312)

Over 10,000+ patients across
hundreds of US centers



**Ideal procedure outcomes to
get patients back to their lives.**

Procedure time was approximately 1 hour



BUILT UPON 29+ YEARS OF THE PERCLOSE™ LEGACY^{1*}

Perclose™ ProStyle™ Suture-Mediated Closure and Repair System



HIGHER TENSILE STRENGTH NEEDLES

15% increased suture deployment success
in the same complex, challenging anatomy¹

IMPROVED EASE OF USE

Improved usability and more intuitive
deployment experience¹

SHORT PATIENT RECOVERY

As short as 2-hour time to ambulation for small
and
large-bore procedures²

15
MILLION
REPAIRS^{1**}

