

CASO 1:



Operadores: **Neus Salvatella Giralt**
Montserrat Gracida

Moderadores:

- **Eduardo Pinar Bermúdez**
- **Jose Fco. Díaz Fernández**

Panelistas:

- *Santiago G. Solana Martínez*
- *Marco Alcocer Gamba*
- *Pablo Aguiar Souto*
- *Guillermo Aldama López*
- *Mónica Fernández Quero*

Glidesheath Slender® Hydrophilic Coated Introducer Sheath

1 **Diámetro externo
reducido en 1 Fr**

2 **Mantiene el
diámetro del lumen**

3 **Reduce la necesidad de
cambiar a un introductor de
talla superior**

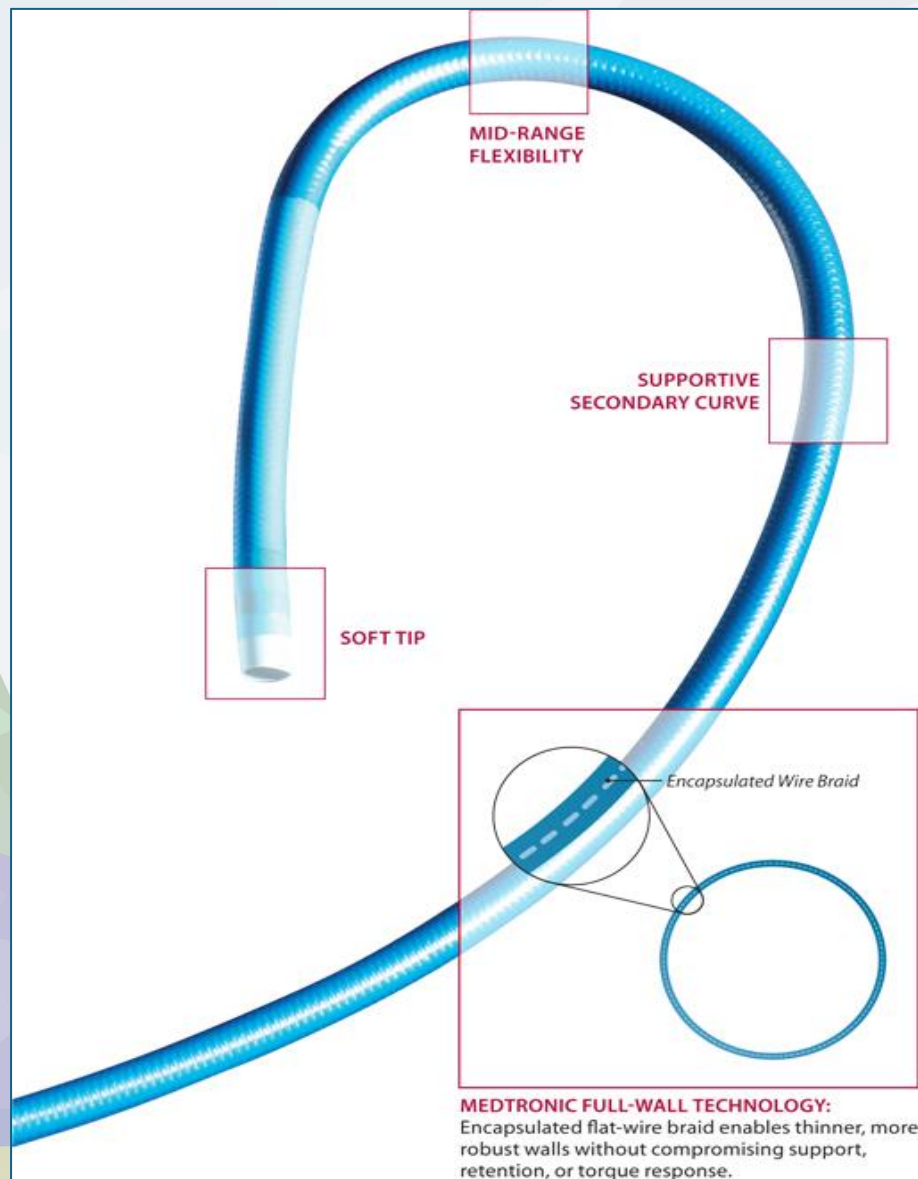
**Introductor
convencional
6Fr**

**Lumen
Equivalente**

**Glidesheath
Slender®
6Fr**

**Diámetro externo
Equivalente**

**Introductor
convencional
5Fr**



Medtronic LAUNCHER

LARGE LUMEN GUIDE BALANCING FLEXIBILITY AND SUPPORT

- Workhorse construction suitable for various anatomies and takeoffs
- Flexible distal segment enables you to engage for backup support
- Supportive secondary curve for backup support and curve retention

ENHANCED VISUALIZATION

- Larger lumens to maximize contrast flow for enhanced visualization
- Radiopaque marker band and nylon shaft

FULL-WALL TECHNOLOGY CONSTRUCTION

- Robust, thinner walls without compromising support or curve retention

FULL RANGE OF CORONARY AND PERIPHERAL CURVES

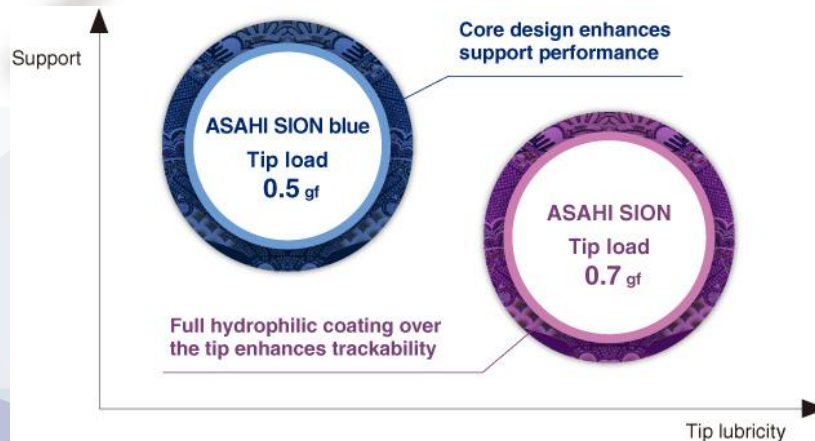
- 5F – 8F sizes available
- Custom lengths and custom program available

**ASAHI
SION**
PTCA GUIDE WIRE

**ASAHI
SION blue**
PTCA GUIDE WIRE

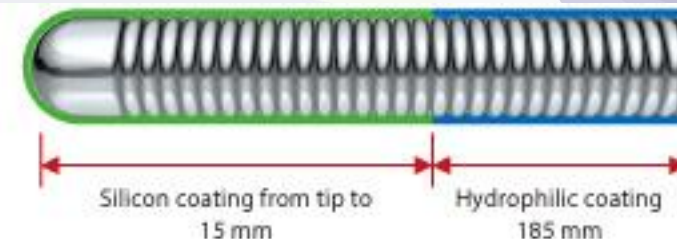
Durability • Control

► Success

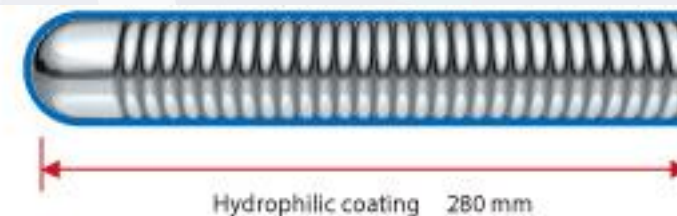


WorldMedica
BRINGING TOOLS FOR EXCELLENCE

ASAHI SION blue
For safety



ASAHI SION
For crossability



ASAHI SION blue

- **Safety**
 - Softer tip, reduced lubricity
- **Device delivery**
 - Higher support ability
- **Differentiation of wires**
 - Changed shaft color

• Torque performance

- Wire reacts as expected
- Navigate tortuosity
- Superior control

• Tip memory & shaping

- Possible to select multiple vessels

ASAHI SION

• Lesion crossing

- For complex cases

• Vessel trackability

- Flexible shaft support

Workhorse Guide Wires

HI-TORQUE TURNTRAC™

HI-TORQUE TURNTRAC™ Guide Wire

RESPONSEASE Parabolic Core Grind



Distal Core Material:
Elastinite™
Nitinol

Cover Type or Coils:
Bare Coils

Tip Style:
Core-to-tip

Distal Coatings:
Hydrophilic

Tip Load* (g):
0.8

TURNTRAC™

FLEX™
Tip Load* (g):
0.6

HI-TORQUE VERSATURN™

HI-TORQUE VERSATURN™ Guide Wire

RESPONSEASE Parabolic Core Grind



Distal Core Material:
Elastinite™
Nitinol

Cover Type or Coils:
Bare Coils

Tip Style:
Core-to-tip

Distal Coatings:
Hydrophilic

Tip Load* (g):
0.8



Abbott

HI-TORQUE BALANCE MIDDLEWEIGHT™

HI-TORQUE BALANCE MIDDLEWEIGHT™ Guide Wire



Distal Core Material:
Elastinite™
Nitinol

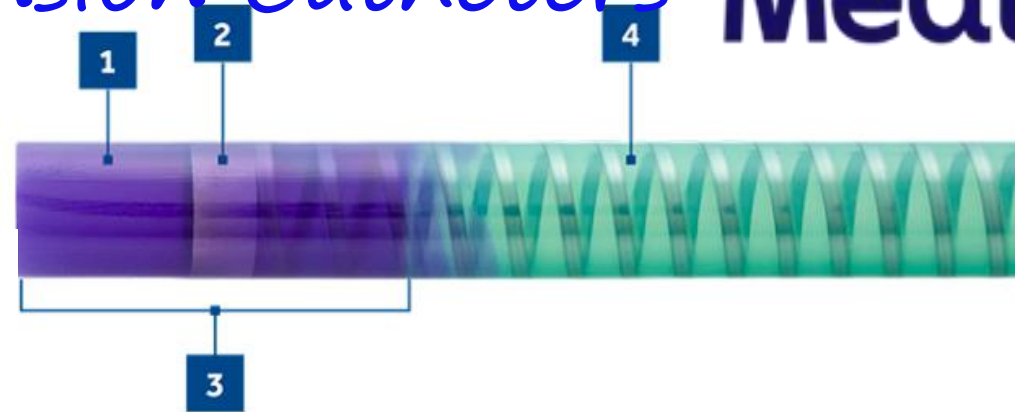
Cover Type or Coils:
Bare Coils

Tip Style:
Shaping
Ribbon

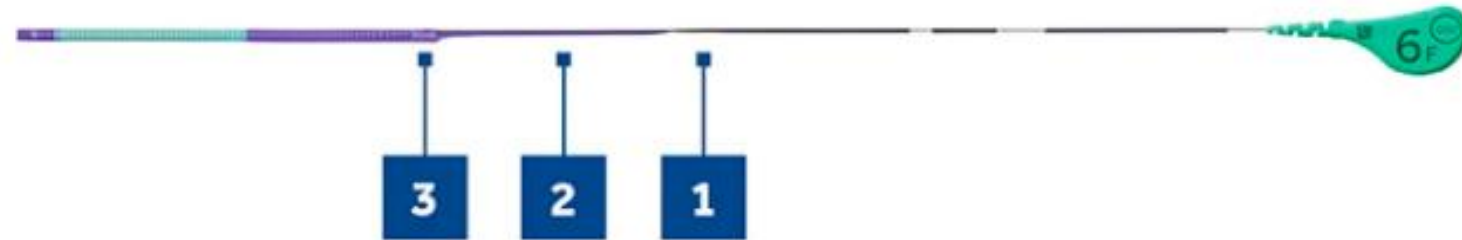
Distal Coatings:
Hydrophilic or
Hydrophobic

Tip Load* (g):
0.6

Telescope - Guide Extension Catheters Medtronic

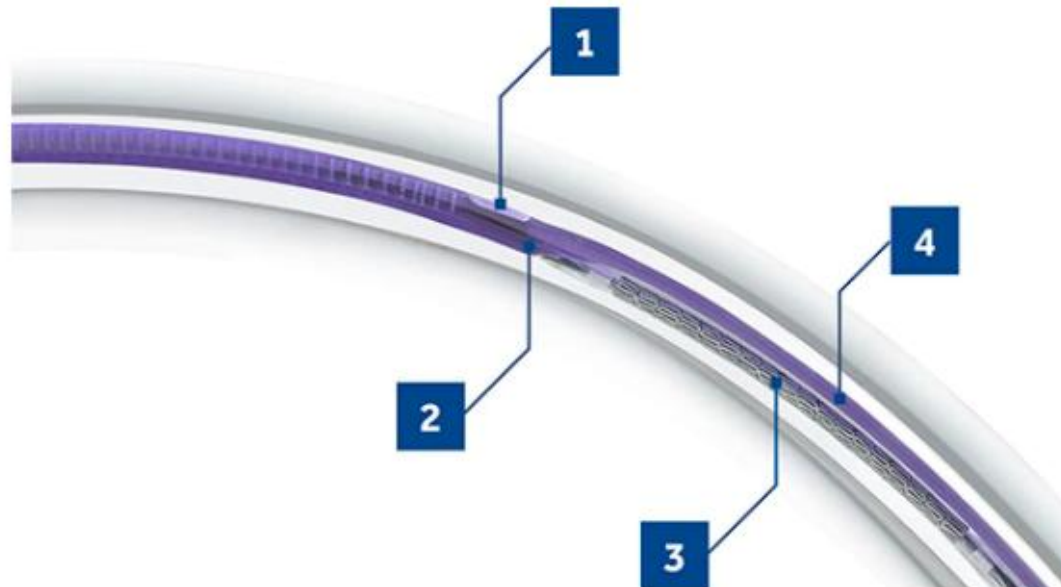


- 1. 2-mm TruFlex tip
- 2. 1-mm distal marker band
- 3. 5-mm distal segment featuring soft polymer
- 4. Main jacket



- 1. **Tapered distal pushwire section** — transitions from solid, round, proximal pushwire for flexibility
- 2. **Short 4 cm polymer on-ramp** — maintains superior deliverability³ and channels interventional devices
- 3. **Entry port** — contributes to smooth device entry and delivery

TELESCOPE GEC IN GLASS AORTIC ARCH MODEL



- 1. Spade-shaped marker band confirms orientation of catheter on fluoroscopy
- 2. Entry port
- 3. Resolute Onyx™ DES traveling along the on-ramp toward the entry port
- 4. On-ramp

Euphor

a

Coronary Balloon

Distal shaft

Platinum iridium
marker bands

Proximal shaft





Dura-Trac
hydrophilic coating

Ultra-Slim
balloon material

Medtronic

NC Euphora Coronary Balloon



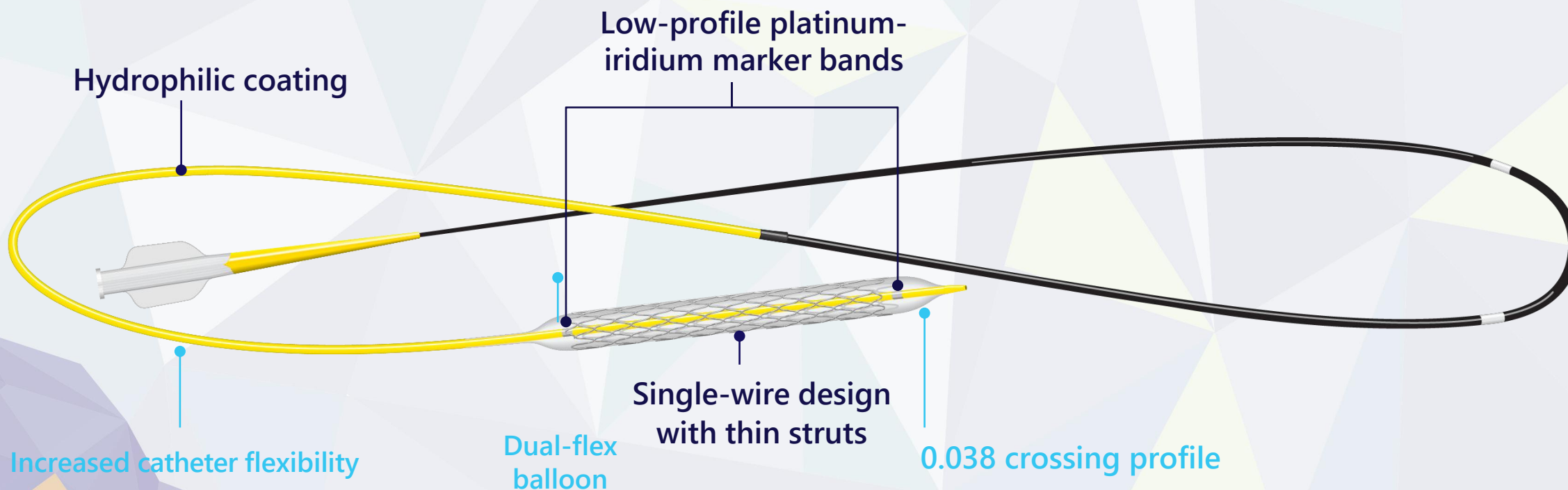
	EXCELLENT RECROSS Low lesion entry profile (0.015") improves tracking through challenging lesions with low likelihood of catching on stents* and excellent recross†
	PLATINUM IRIIDIUM Marker bands enhance visibility
	LOW GROWTH PROFILE AND DURABILITY Strong, durable and flexible proprietary balloon material provides high-pressure capability‡ and a low growth profile‡
	SUPERIOR DELIVERABILITY PowerTrac™ technology enables superior deliverability

Medtronic

Onyx Frontier™ DES is engineered to deliver:

- Unique to Onyx Frontier DES
- Inherited from Resolute Onyx™ DES

Medtronic

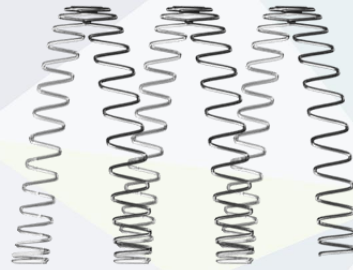


Onyx Frontier™

DES is engineered to deliver:
Single-wire design increases
conformability:



Sinusoid-formed wire

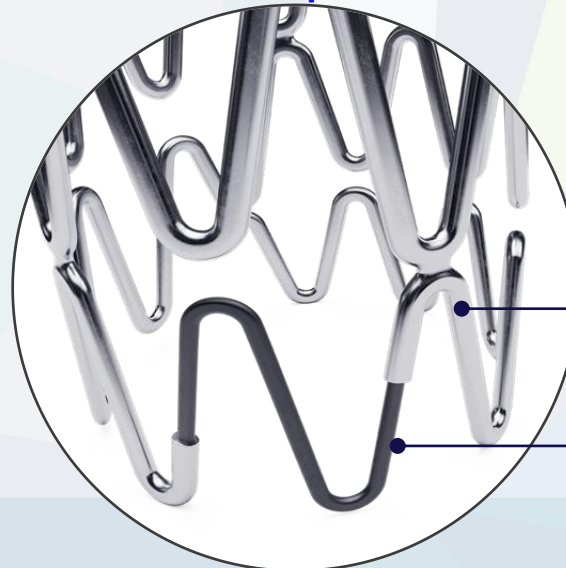


Helical wrap



Laser-fused

Platinum-iridium
core
increases visibility
and radial strength:

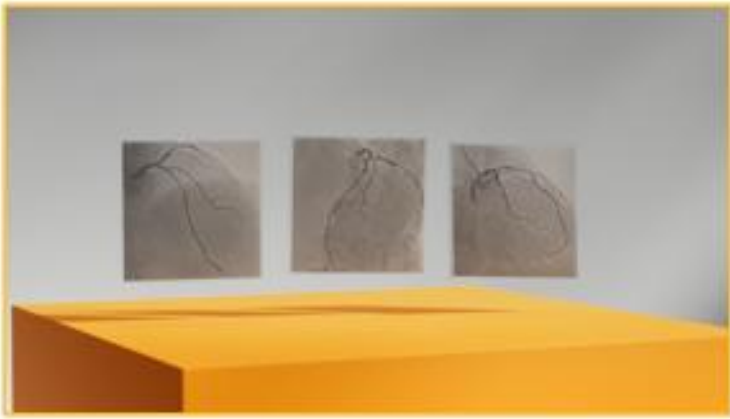


Cobalt alloy shell

Platinum-iridium core

Drug-free, Wire-free Coronary Physiology

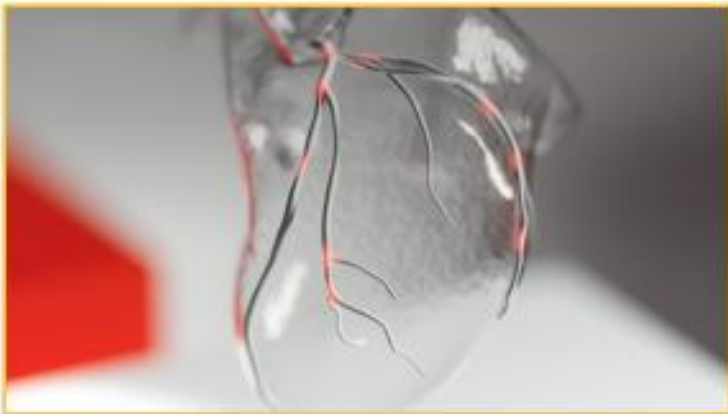
1 Optimal 2D Angiography



2 3D Model Reconstruction

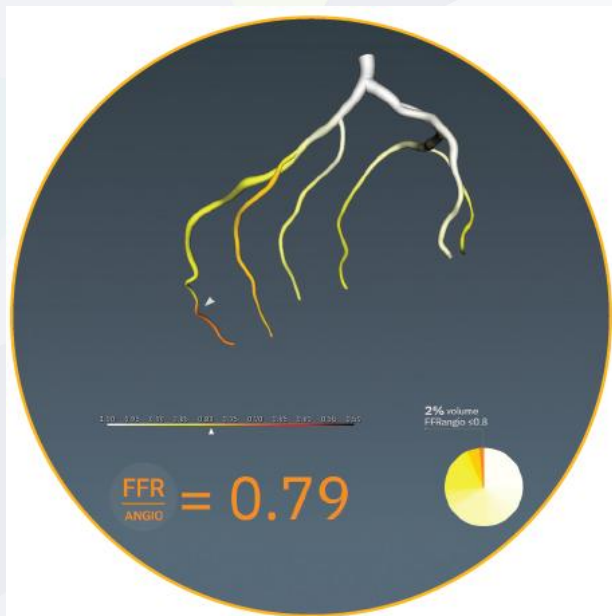


3 Resistance Analysis



4 Comprehensive Physiological Assessment





CATHWORKS®

DECIDE SMARTER

Gain a more comprehensive picture of your patient's physiology

- Real-time FFR_{Angio} values at every point of the vessel for the entire coronary tree
- Simulated pullback curve to help differentiate diffuse from focal disease and target the most important segments

TREAT CONFIDENTLY

Be confident that you're making the best decisions for your patients

- Excellent diagnostic performance compared to invasive wire-based FFR₂
- Interactive sizing tool allows you to quickly estimate lesion lengths and vessel diameters

93%

Diagnostic
accuracy

91%

Sensitivity

94%

Specificity

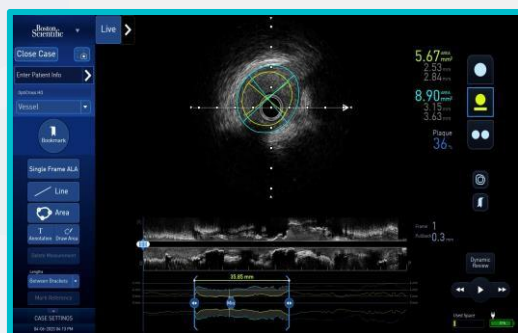
Medtronic

AVVIGO™ Multi-Modality Guidance System



Boston Scientific
Advancing science for life™

Key Features

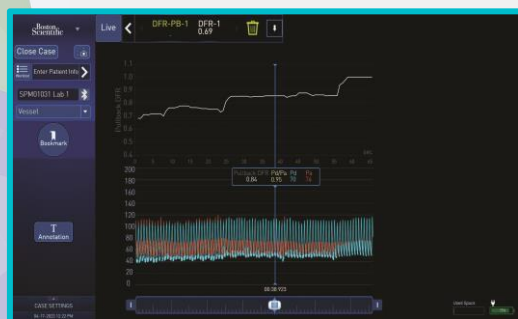
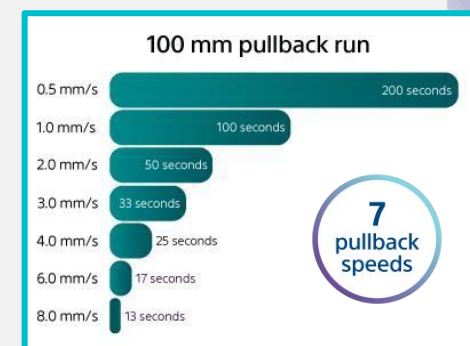


Automated Lesion Assessment (ALA™) Precise Vessel Measurements¹

- AI-enhanced lumen and vessel borders
- Vessel profile
- Key frame markers

Fast Pullback ^{ss} High quality images at the pullback speed you want

Automatic pullback now includes faster speeds up to 8 mm/s allowing for quicker vessel imaging



PhysioMap™ Enhanced DFR guidance*

Optimize your treatment decisions by **quickly locating** regions of pressure change during a pullback

Tablesides Control ^s Complete control from the sterile field

Operate IVUS and capture physiological measurements on your integrated system without leaving the sterile field



Control Room

